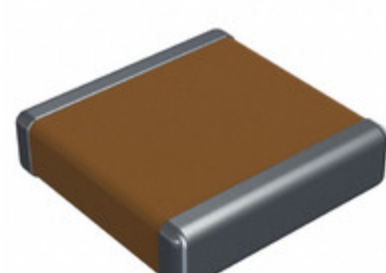


## 22251C334MAT2A



**Part Number:** [22251C334MAT2A](#)

**Manufacturer:** [AVX Corporation](#)

**Description:** CAP CER 0.33UF 100V X7R 2225

**Data sheet:** [Ceramic Chip Capacitor Catalog](#)

[X7R Dielectric Capacitor Series](#)

**RoHS Status:** Lead free / RoHS Compliant

**Ship From:** Hong Kong

**Shipment Way:** DHL/Fedex/TNT/UPS/EMS

Images are for reference only.  
See Product Specifications for product details.  
Buy 22251C334MAT2A with confidence from  
Component-World.HK, 1 Year Warranty

[Request For Quotation](#)

### PRODUCT PARAMETER

<b>Part Number</b>	22251C334MAT2A	<b>Manufacturer</b>	<a href="#">AVX Corporation</a>	
<b>Description</b>	CAP CER 0.33UF 100V X7R 2225	<b>Lead Free Status / RoHS Status</b>	Lead free / RoHS Compliant	
<b>Quantity Available</b>	66094 pcs	<b>Data sheet</b>	<a href="#">Ceramic Chip Capacitor Catalog</a> <a href="#">X7R Dielectric Capacitor Series</a>	
<b>Category</b>	<a href="#">Capacitors</a>	<b>Voltage - Rated</b>	100V	
<b>Tolerance</b>	±20%	<b>Thickness (Max)</b>	0.060" (1.52mm)	
<b>Temperature Coefficient</b>	X7R	<b>Size / Dimension</b>	0.225" L x 0.250" W (5.72mm x 6.35mm)	
<b>Series</b>	-	<b>Ratings</b>	-	
<b>Packaging</b>	Tape & Reel (TR)	<b>Package / Case</b>	2225 (5763 Metric)	
<b>Operating Temperature</b>	-55°C ~ 125°C	<b>Mounting Type</b>	Surface Mount, MLCC	
<b>Moisture Sensitivity Level (MSL)</b>	1 (Unlimited)	<b>Manufacturer Standard Lead Time</b>	20 Weeks	
<b>Lead Style</b>	-	<b>Lead Spacing</b>	-	
<b>Lead Free Status / RoHS Status</b>	Lead free / RoHS Compliant	<b>Height - Seated (Max)</b>	-	
<b>Features</b>	-	<b>Failure Rate</b>	-	
<b>Detailed Description</b>	0.33µF ±20% 100V Ceramic Capacitor X7R 2225 (5763 Metric)		<b>Capacitance</b>	0.33µF
<b>Applications</b>	General Purpose			

Component-World.com is a Reliable Stocking Distributor of Electronic Components. We specialize in all AVX Corporation series electronic components. We have 66094 pieces of AVX Corporation 22251C334MAT2A in stock available now. Request a quote from electronics components distributor at Component-World.com, our sales team will contact you within 24 hours.

RFQ Email: [info@Components-World.com](mailto:info@Components-World.com)

### RELATED PRODUCTS

	<b>Part#:</b> <a href="#">22251C155KAT2A</a> <b>Description:</b> CAP CER 1.5UF 100V X7R 2225	<b>Manufacturers:</b> <a href="#">AVX Corporation</a>	<a href="#">RFQ</a>
	<b>Part#:</b> <a href="#">22251C334JAT2A</a> <b>Description:</b> CAP CER 0.33UF 100V X7R 2225	<b>Manufacturers:</b> <a href="#">AVX Corporation</a>	<a href="#">RFQ</a>
	<b>Part#:</b> <a href="#">22252A123JAT2A</a> <b>Description:</b> CAP CER 0.012UF 200V NP0 2225	<b>Manufacturers:</b> <a href="#">AVX Corporation</a>	<a href="#">RFQ</a>
	<b>Part#:</b> <a href="#">22251C125KAT1A</a> <b>Description:</b> CAP CER 1.2UF 100V X7R 2225	<b>Manufacturers:</b> <a href="#">AVX Corporation</a>	<a href="#">RFQ</a>
	<b>Part#:</b> <a href="#">22251C125KAT2A</a> <b>Description:</b> CAP CER 1.2UF 100V X7R 2225	<b>Manufacturers:</b> <a href="#">AVX Corporation</a>	<a href="#">RFQ</a>
	<b>Part#:</b> <a href="#">22251C224KAT2A</a> <b>Description:</b> CAP CER 0.22UF 100V X7R 2225	<b>Manufacturers:</b> <a href="#">AVX Corporation</a>	<a href="#">RFQ</a>
	<b>Part#:</b> <a href="#">22251C474JAT2A</a> <b>Description:</b> CAP CER 0.47UF 100V X7R 2225	<b>Manufacturers:</b> <a href="#">AVX Corporation</a>	<a href="#">RFQ</a>
	<b>Part#:</b> <a href="#">22251C105MAT4A</a> <b>Description:</b> CAP CER 1UF 100V X7R 2225	<b>Manufacturers:</b> <a href="#">AVX Corporation</a>	<a href="#">RFQ</a>
	<b>Part#:</b> <a href="#">22251C334KAT2A</a> <b>Description:</b> CAP CER 0.33UF 100V X7R 2225	<b>Manufacturers:</b> <a href="#">AVX Corporation</a>	<a href="#">RFQ</a>
	<b>Part#:</b> <a href="#">22251C684MAT2A</a> <b>Description:</b> CAP CER 0.68UF 100V X7R 2225	<b>Manufacturers:</b> <a href="#">AVX Corporation</a>	<a href="#">RFQ</a>
	<b>Part#:</b> <a href="#">22251C155MAT2A</a> <b>Description:</b> CAP CER 1.5UF 100V X7R 2225	<b>Manufacturers:</b> <a href="#">AVX Corporation</a>	<a href="#">RFQ</a>
	<b>Part#:</b> <a href="#">22251C564KAT2A</a> <b>Description:</b> CAP CER 0.56UF 100V X7R 2225	<b>Manufacturers:</b> <a href="#">AVX Corporation</a>	<a href="#">RFQ</a>
	<b>Part#:</b> <a href="#">22251C824KAT2A</a> <b>Description:</b> CAP CER 0.82UF 100V X7R 2225	<b>Manufacturers:</b> <a href="#">AVX Corporation</a>	<a href="#">RFQ</a>
	<b>Part#:</b> <a href="#">22251C684KAT2A</a> <b>Description:</b> CAP CER 0.68UF 100V X7R 2225	<b>Manufacturers:</b> <a href="#">AVX Corporation</a>	<a href="#">RFQ</a>
	<b>Part#:</b> <a href="#">22251C474MAT2A</a> <b>Description:</b> CAP CER 0.47UF 100V X7R 2225	<b>Manufacturers:</b> <a href="#">AVX Corporation</a>	<a href="#">RFQ</a>
	<b>Part#:</b> <a href="#">22251C224MAT2A</a> <b>Description:</b> CAP CER 0.22UF 100V X7R 2225	<b>Manufacturers:</b> <a href="#">AVX Corporation</a>	<a href="#">RFQ</a>
	<b>Part#:</b> <a href="#">22251C105MAT2A</a> <b>Description:</b> CAP CER 1UF 100V X7R 2225	<b>Manufacturers:</b> <a href="#">AVX Corporation</a>	<a href="#">RFQ</a>
	<b>Part#:</b> <a href="#">22251C684KA12D</a> <b>Description:</b> CAP CER 0.68UF 100V X7R 2225	<b>Manufacturers:</b> <a href="#">AVX Corporation</a>	<a href="#">RFQ</a>
	<b>Part#:</b> <a href="#">22251C474KAT4A</a> <b>Description:</b> CAP CER 0.47UF 100V X7R 2225	<b>Manufacturers:</b> <a href="#">AVX Corporation</a>	<a href="#">RFQ</a>
	<b>Part#:</b> <a href="#">22251C474KAT2A</a> <b>Description:</b> CAP CER 0.47UF 100V X7R 2225	<b>Manufacturers:</b> <a href="#">AVX Corporation</a>	<a href="#">RFQ</a>

### Related keywords for 22251C334MAT2A

<a href="#">AVX Corporation 22251C334MAT2A</a>	<a href="#">22251C334MAT2A distributor</a>	<a href="#">22251C334MAT2A supplier</a>	<a href="#">22251C334MAT2A price</a>
<a href="#">22251C334MAT2A download datasheet</a>	<a href="#">22251C334MAT2A datasheet</a>	<a href="#">22251C334MAT2A stock</a>	<a href="#">buy 22251C334MAT2A</a>
<a href="#">AVX Corporation 22251C334MAT2A</a>	<a href="#">AVX Corporation [MIL] 22251C334MAT2A</a>		